



UNIVERSITY OF CALIFORNIA  
**SANTA CRUZ**



**Graduate Student Housing  
Student Advisory Council  
January 8, 2018**

# Student Advisory Council

## Agenda – January 9, 2087

---

- Introductions and Overview of Meeting – 5 min
- Scheduling of Future Student Advisory Council Meetings & Discussion Topics – 10 mins
- Updates on Student Housing West – 15 mins
  - Schedule and Phasing
  - Design & Program
- Update and Review of Graduate Student Housing - 40 mins
  - Communal living Concept
  - New Unit plans
  - Communal building Plans
  - Communal Common Spaces
- Open Discussion – 15 mins
- Wrap Up + Next Meetings – 5 mins
  - Next meeting date: January 22<sup>nd</sup>, 3:30-5:00 pm, Location TBD

# Student Advisory Council

## Future Meeting Dates + Topics

---

### Winter / Spring Quarters - 2018

January 22

February 5

February 26

March 12

Winter Qtr. Exams + Spring Break (March 19-30)

April 2 (1<sup>st</sup> day of spring qtr.)

April 16

April 30

May 14

June 4

Spring Qtr. Exams (June 11-15)

# Student Advisory Council

## Future Meeting Dates + Topics

---

### Discussion Topics

#### January & February - 2018

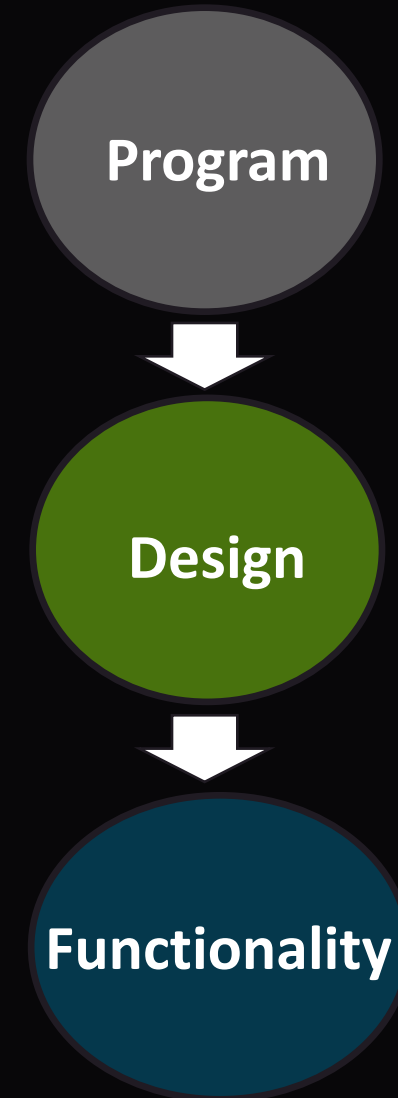
- Units/Floor Plans
- Common Spaces & Amenities
- HUB (commons, wellness, market)

#### March & April - 2018

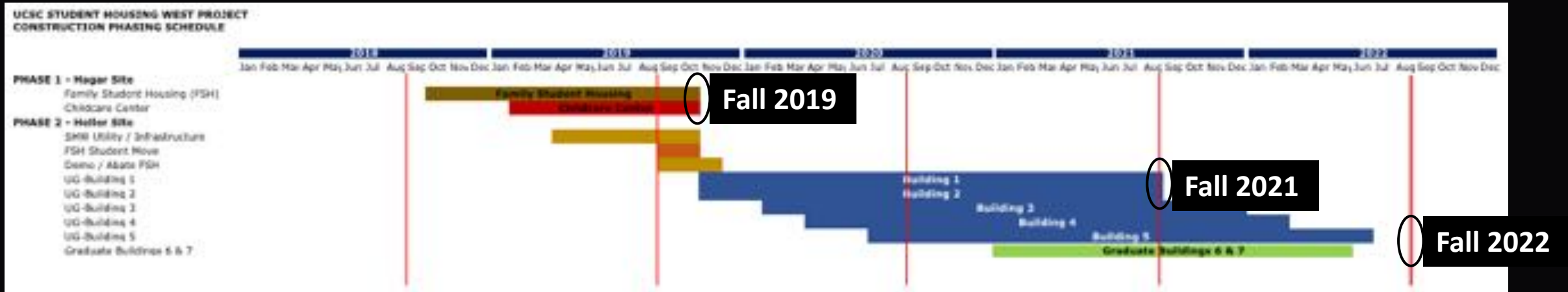
- Sustainability
- Technology
- Transportation & Circulation

#### May & June – 2018

- Operations & Services



# Construction Schedule/Phasing



## PHASE 1

Family Student Housing – Sept. 2019 (Move-in)

Childcare Center – Aug/Sept. 2019 (Move-in)

## PHASE 2

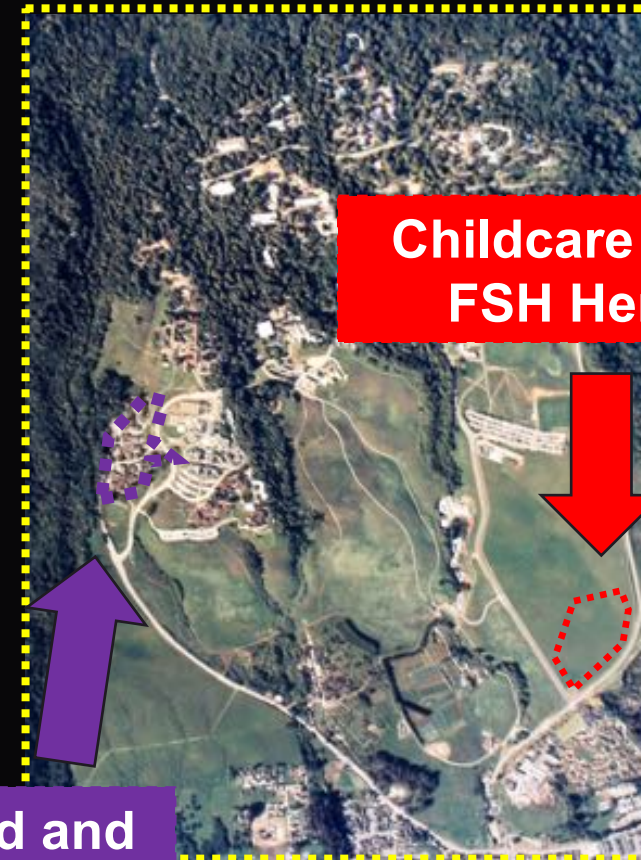
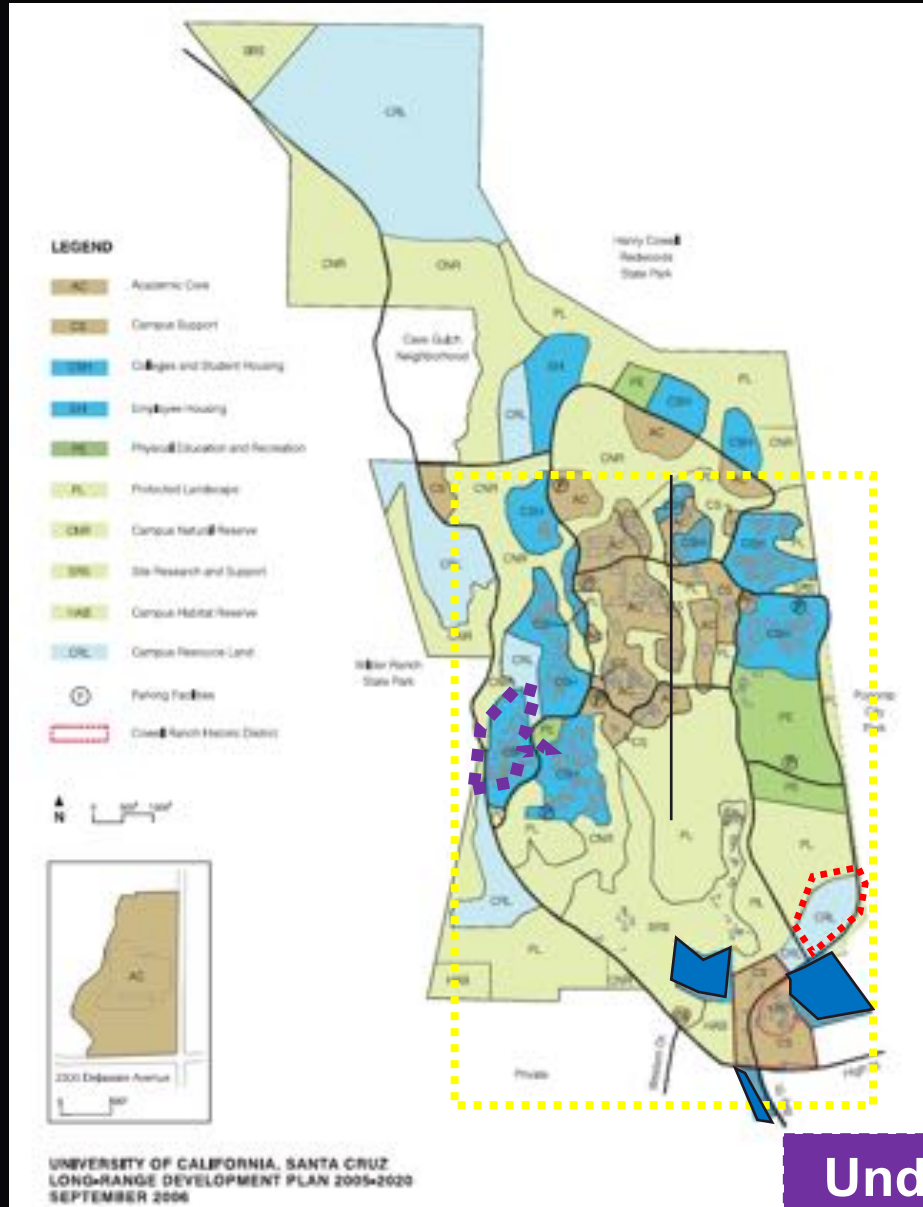
Demo/Abate FSH – Start Sept. 2019

Undergraduate Bldgs. 1-2 – Sept 2021 (Move-in)

Undergraduate Bldgs. 3-5 – Sept. 2022 (Move-in)

Graduate Bldgs. 6-7 – Sept. 2022 (Move-in)

# Childcare and Family Student Housing to Alternate Location





# Discussion Topics

- New Unit plans
- Communal building Plans
- Communal Common Spaces
- Preferred Options
- Open Discussion



**GRAD -  
2 bed /  
1 bath**

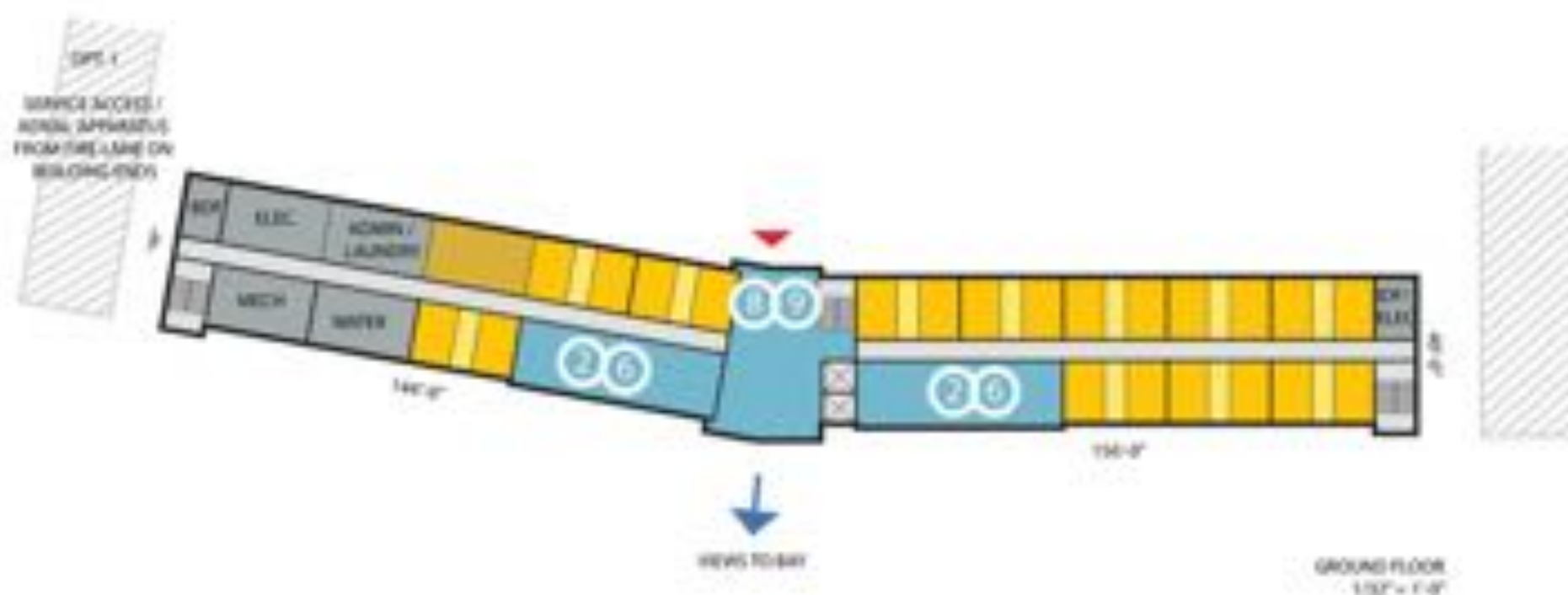
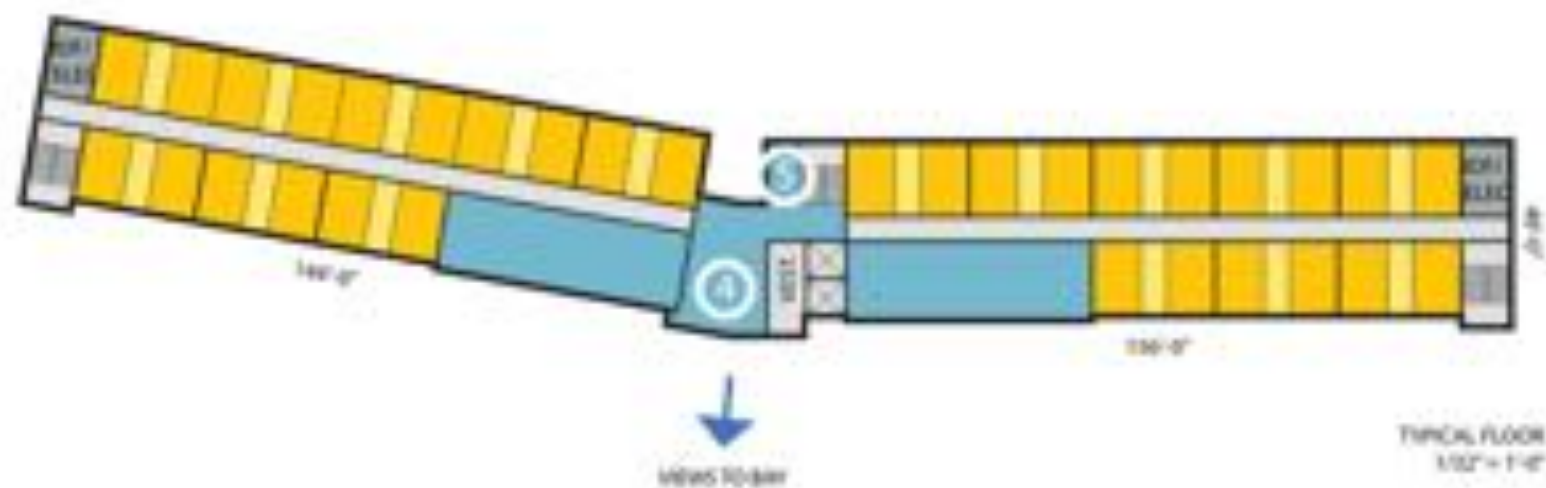


**GRAD -  
Studio /  
1 bath**



**GRAD -  
2 bed /  
1 bath**





32 BEDS / FLOOR (24 FLOORS)  
128 BEDS

16,800 GSF - GROUND FLOOR

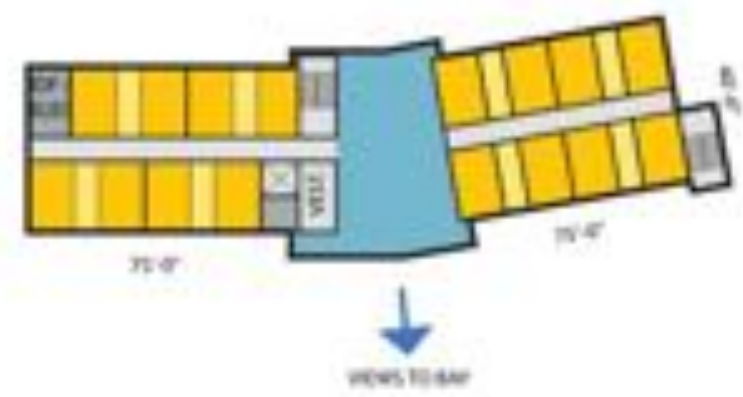
18,300 GSF - TYPICAL FLOOR

41,300 GSF

- CRE SPT
- STUDENT BEDROOM
- SHARED BATHROOM
- COMMUNAL LIVING / KITCHEN
- BACK OF HOUSE
- CIRCULATION

GRADUATE BUILDING - OPTION 1

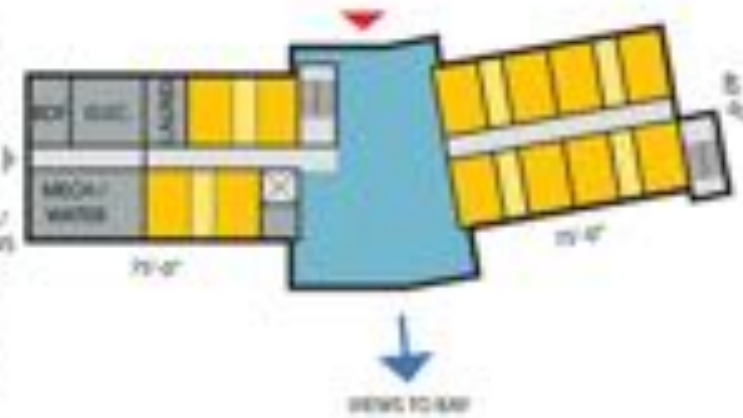
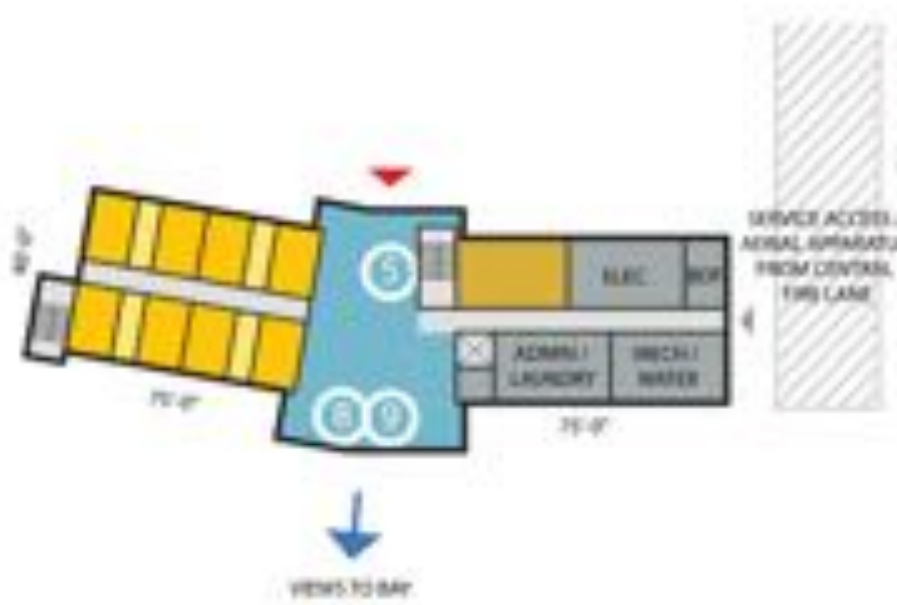
1/3/2018



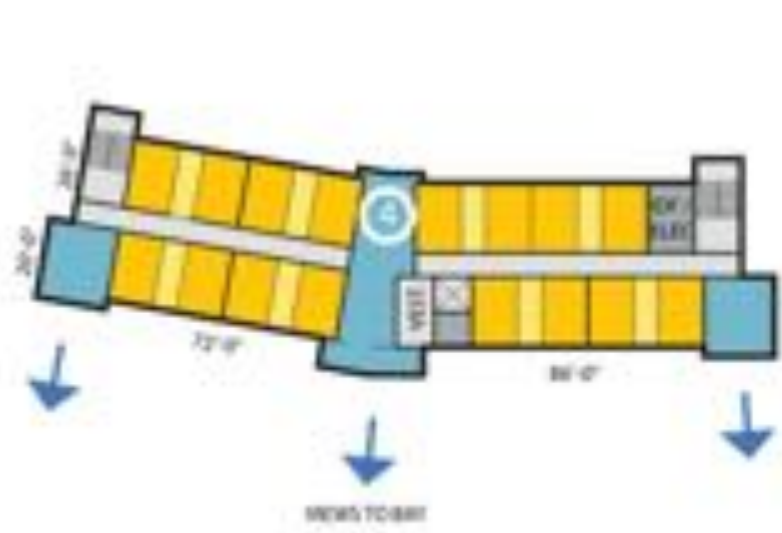
TYPICAL FLOOR  
1/32" = 1'-0"

18 BEDS / FLOOR (36 FLOORS)  
 66 BEDS / BUILDING = 120 BEDS TOTAL  
 3,480 GSF x 2 = GROUND FLOOR  
 3,390 GSF x 2 = TYPICAL FLOOR  
 21,890 GSF x 2 = 43,780 GSF TOTAL

- CREAPT
- STUDENT BEDROOM
- SHARED BATHROOM
- COMMUNAL LIVING / KITCHEN
- BACK OF HOUSE
- CIRCULATION



GROUND FLOOR  
1/32" = 1'-0"



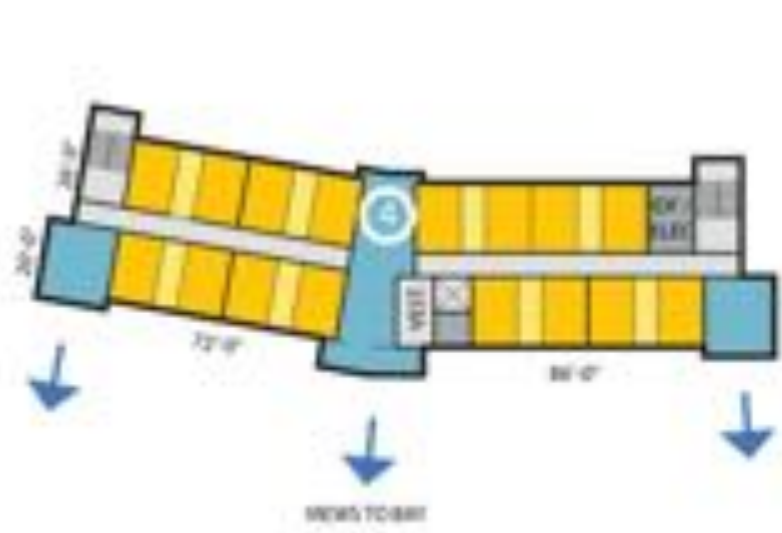
TYPICAL FLOOR  
102' x 14'

18 BEDS / FLOOR (2X FLOORS)  
 68 BEDS / BUILDING = 120 BEDS TOTAL  
 5,495 GSF x2 - GROUND FLOOR  
 5,275 GSF x2 - TYPICAL FLOOR  
 21,540 GSF x3 - 41,600 GSF TOTAL

- CB SPT
- STUDENT BEDROOM
- SHARED BATHROOM
- COMMUNAL LIVING / KITCHEN
- BACK OF HOUSE
- CIRCULATION



GROUND FLOOR  
102' x 14'



TYPICAL FLOOR  
102' x 14'

18 BEDS / FLOOR (2X FLOORS)  
 68 BEDS / BUILDING = 120 BEDS TOTAL  
 5,495 CSF x2 - GROUND FLOOR  
 5,275 CSF x2 - TYPICAL FLOOR  
 21,540 CSF x3 = 41,600 CSF TOTAL

- CB SPT
- STUDENT BEDROOM
- SHARED BATHROOM
- COMMUNAL LIVING / KITCHEN
- BACK OF HOUSE
- CIRCULATION



SERVICE ACCESS /  
 AERIAL STAIRWELLS  
 FROM FIRE LANE



GROUND FLOOR  
102' x 14'







GRADUATE BUILDING - IMAGES  
COMMUNAL LIVING

# Rental Rates

- Draft !!!



UNIVERSITY OF CALIFORNIA  
**SANTA CRUZ**

