

UC SANTA CRUZ FAMILY STUDENT HOUSING

DAB-2 26 MARCH 2018
50% DESIGN DEVELOPMENT REVIEW

MAIN TOPICS

Campus context

Landscaping approach

View corridors

Street presence

Variations in massing

Materiality

Articulation in facades

Solar studies

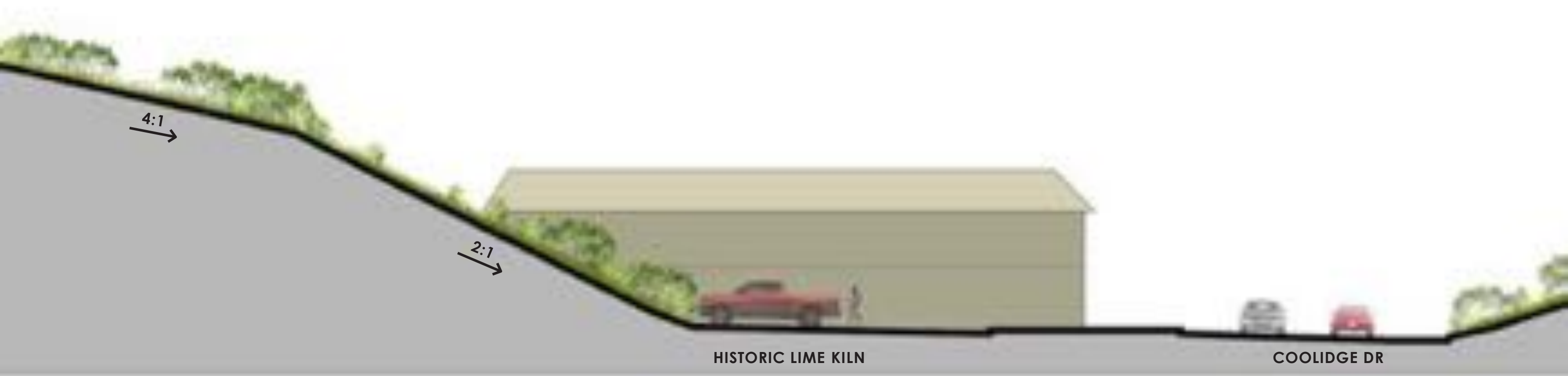












HISTORIC LIME KILN

COOLIDGE DR









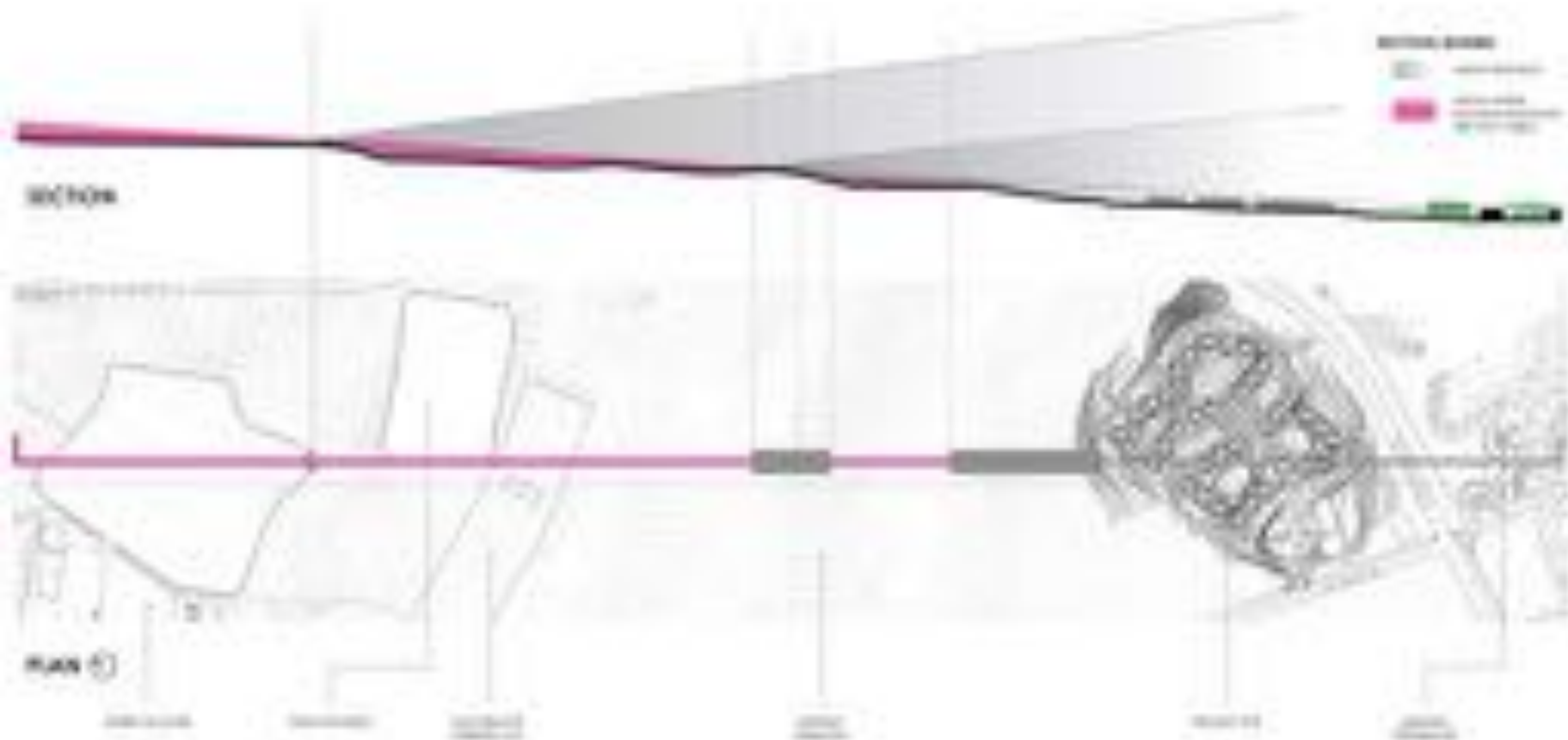










































CALIFORNIA POPPY
(*Eschscholzia californica*)



CALIFORNIA MEADOW SEDGE
(*Carex pansa*)



COMMON YARROW
(*Achillea millefolium*)



FOOTHILL NEEDLEGRASS
(*Nassella lepida*)

coastal prairie grassland palette

CALIFORNIA MEADOW
SEDE
(*Carex pansa*)
RED FESCUE
(*Festuca rubra*)
FOOTHILL NEEDLEGRASS
(*Nassella lepida*)

CALIFORNIA POPPY
(*Eschscholzia californica*)
COMMON YARROW
(*Achillea millefolium*)



COAST LIVE OAK
(*Quercus agrifolia*)



BLUE BLOSSOM
(*Ceanothus thyrsiflorus*)



'TWIN PEAKS' COYOTE BRUSH
(*Baccharis pilularis* 'Twin Peaks')



FLANNEL BUSH
(*Fremontodendron Californica*)

Chapparral / Coast scrub shrub palette

INTERIOR LIVE OAK
(*Quercus wislizenii*)

BLUE BLOSSOM
(*Ceanothus thyrsiflorus*)

ARROYO DE LA CRUZ
MANZANITA
(*Arctostaphylos 'Cruzensis'*)

'TWIN PEAKS' COYOTE
BRUSH
(*Baccharis pilularis* 'Twin
Peaks')

KINNICKINNICK
(*Arctostaphylos uva-ursi*)

TOYON
(*Heteromeles arbutifolia*)

PT. REYES CEANOTHUS
(*Ceanothus 'Anchor Bay'*)

FLANNEL BUSH
(*Fremontodendron Californica*)

HOLLYLEAF CHERRY
(*Prunus ilicifolia*)



ROSEMARY
(*Rosmarinus spp.*)



PURPLE SAGE
(*Salvia leucophylla*)



DWARF MAT RUSH
(*Lomandra longifolia* 'Breeze')



WESTERN REDBUD
(*Cercis occidentalis*)



BLUE CHALKSTICKS
(*Senedo mandraliscae*)

native and climate adaptive palette

COAST LIVE OAK
(*Quercus agrifolia*)

FORTNIGHT LILY
(*Dietes bicolor*)

STONE CROP
(*Sedum 'Angelina'*)

AEONIUM
(*Aeonium spp.*)

CAJEPUT
(*Melaleuca quinquenervia*)

BLUE CHALKSTICKS
(*Senecio mandraliscae*)

CREeping MYOPORUM
(*Myoporum parvifolium*)

CAPE RUSH
(*Chondropetalum tectorum*)

WESTERN REDBUD
(*Cercis occidentalis*)

'LITTLE REV' DIANELLA
(*Dianella 'Little Rev'*)

MONDO GRASS
(*Ophiopogon japonicus*)

YELLOW KANGAROO PAW
(*Anigozanthos 'Yellow Gem'*)
PACIFIC WAX MYRTLE
(*Myrica californica*)

DWARF MAT RUSH
(*Lomandra longifolia 'Breeze'*)

MEDITERRANEAN SPURGE
(*Euphorbia wulfenii*)

PURPLE SAGE
(*Salvia leucophylla*)

LUPINE
(*Lupinus spp.*)

NEW ZEALAND FLAX
(*Phormium spp.*)

KOHUHU
(*Pittosporum tenuifolium*)

ROSEMARY
(*Rosmarinus spp.*)

'YANKEE POINT' CEAN-
OTHUS
(*Ceanothus 'Yankee Point'*)



COMMON RUSH
(*Juncus patens*)



BERKELEY SEDGE
(*Carex divulsa*)



BLUE ELDERBERRY
(*Sambucus nigra ssp. caerulea*)

stormwater palette

COMMON RUSH
(*Juncus patens*)

BERKELEY SEDGE
(*Carex divulsa*)

BLUE ELDERBERRY
(*Sambucus nigra ssp. caerulea*)

CAPE RUSH
(*Chondropetalum tectorum*)

EVERGREEN
HUCKLEBERRY
(*Vaccinium ovatum*)

PACIFIC WAX MYRTLE
(*Myrica californica*)

CALIFORNIA MEADOW
SEDE
(*Carex pansa*)



MAINTENANCE
BARN

COMMUNITY
GARDEN

COMMONS

COMMONS

COMMONS

PLAYGROUND

COMMUNITY
AND ADMIN
BUILDINGS

COMMONS

EARLY
EDUCATION
CENTER

HAGAR DR

COOLIDGE DR

DESIGN INTENT

The design intent for this project was to create a modern, functional, and sustainable building that would serve as a centerpiece for the community. The building was designed to be energy-efficient, with a focus on natural light and ventilation. The design also incorporated local materials and construction techniques to ensure the building was both aesthetically pleasing and environmentally friendly.

The building was designed to be a multi-use space, capable of hosting a variety of community events and activities. The design included a large open-plan area for gatherings, as well as smaller meeting rooms and a kitchen area. The building was also designed to be accessible to all members of the community, with ramps and elevators provided throughout.

The design process was collaborative, involving the community from the beginning. The design team held several public meetings to gather input and feedback, ensuring that the building met the needs and desires of the community. The final design was a result of this collaborative process, reflecting the unique character and values of the community.

The building was designed to be a model of sustainability, with a focus on energy efficiency and environmental friendliness. The design included a variety of sustainable features, such as solar panels, energy-efficient lighting, and water-saving fixtures. The building was also designed to be accessible to all members of the community, with ramps and elevators provided throughout.

The building was designed to be a multi-use space, capable of hosting a variety of community events and activities. The design included a large open-plan area for gatherings, as well as smaller meeting rooms and a kitchen area. The building was also designed to be accessible to all members of the community, with ramps and elevators provided throughout.

The design process was collaborative, involving the community from the beginning. The design team held several public meetings to gather input and feedback, ensuring that the building met the needs and desires of the community. The final design was a result of this collaborative process, reflecting the unique character and values of the community.



MATERIAL BOARD

1. The material board is a collection of material samples that can be used to create a visual language for a project. It is a tool that helps to communicate the design intent and to ensure consistency across all materials used in the project.

2. The material board is a collection of material samples that can be used to create a visual language for a project. It is a tool that helps to communicate the design intent and to ensure consistency across all materials used in the project.

3. The material board is a collection of material samples that can be used to create a visual language for a project. It is a tool that helps to communicate the design intent and to ensure consistency across all materials used in the project.

4. The material board is a collection of material samples that can be used to create a visual language for a project. It is a tool that helps to communicate the design intent and to ensure consistency across all materials used in the project.

5. The material board is a collection of material samples that can be used to create a visual language for a project. It is a tool that helps to communicate the design intent and to ensure consistency across all materials used in the project.

6. The material board is a collection of material samples that can be used to create a visual language for a project. It is a tool that helps to communicate the design intent and to ensure consistency across all materials used in the project.

7. The material board is a collection of material samples that can be used to create a visual language for a project. It is a tool that helps to communicate the design intent and to ensure consistency across all materials used in the project.

8. The material board is a collection of material samples that can be used to create a visual language for a project. It is a tool that helps to communicate the design intent and to ensure consistency across all materials used in the project.

9. The material board is a collection of material samples that can be used to create a visual language for a project. It is a tool that helps to communicate the design intent and to ensure consistency across all materials used in the project.

10. The material board is a collection of material samples that can be used to create a visual language for a project. It is a tool that helps to communicate the design intent and to ensure consistency across all materials used in the project.



Material Board

1. The material board is a collection of material samples that can be used to create a visual language for a project. It is a tool that helps to communicate the design intent and to ensure consistency across all materials used in the project.



Material Board

2. The material board is a collection of material samples that can be used to create a visual language for a project. It is a tool that helps to communicate the design intent and to ensure consistency across all materials used in the project.



Material Board

3. The material board is a collection of material samples that can be used to create a visual language for a project. It is a tool that helps to communicate the design intent and to ensure consistency across all materials used in the project.



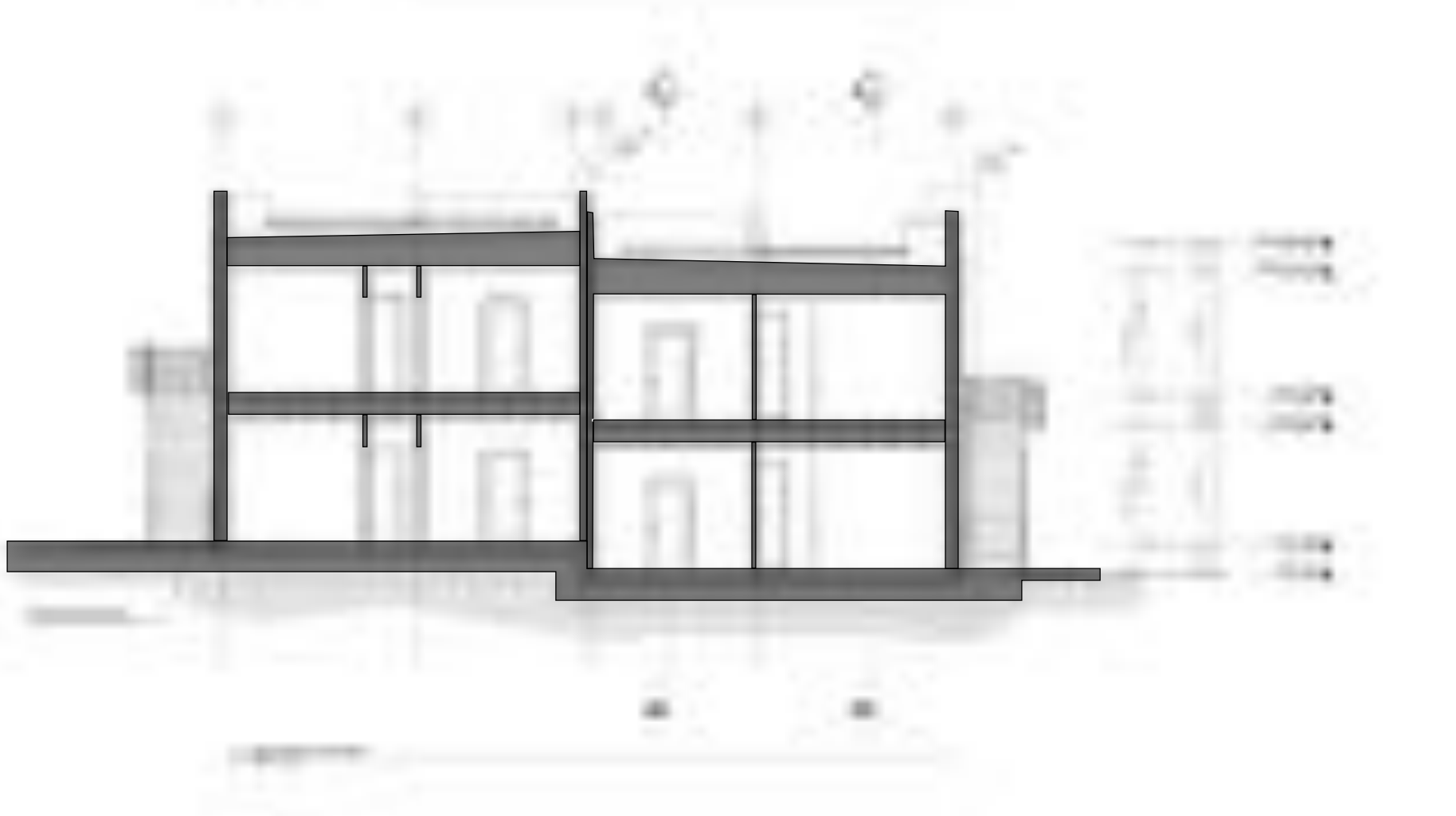
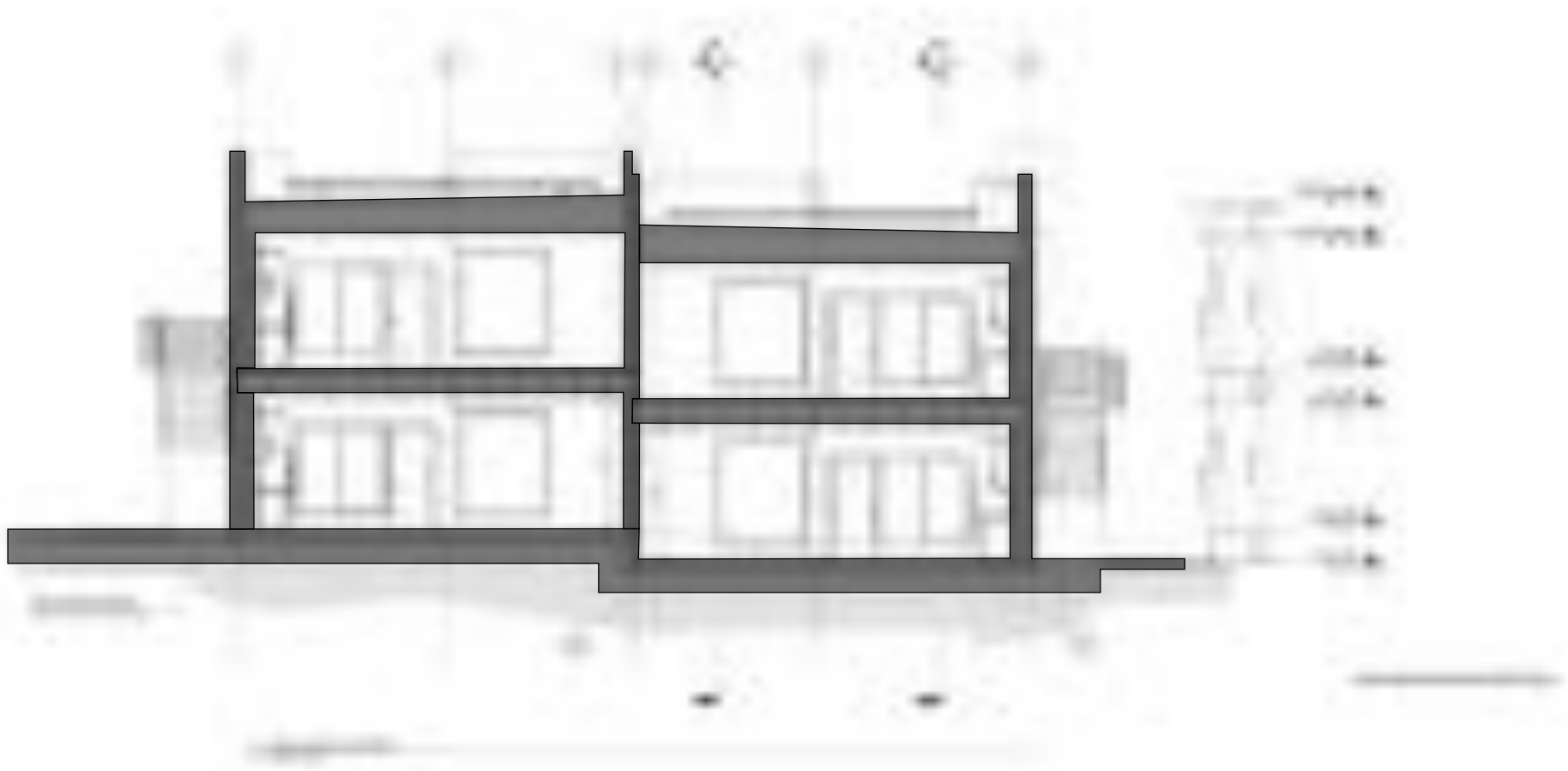


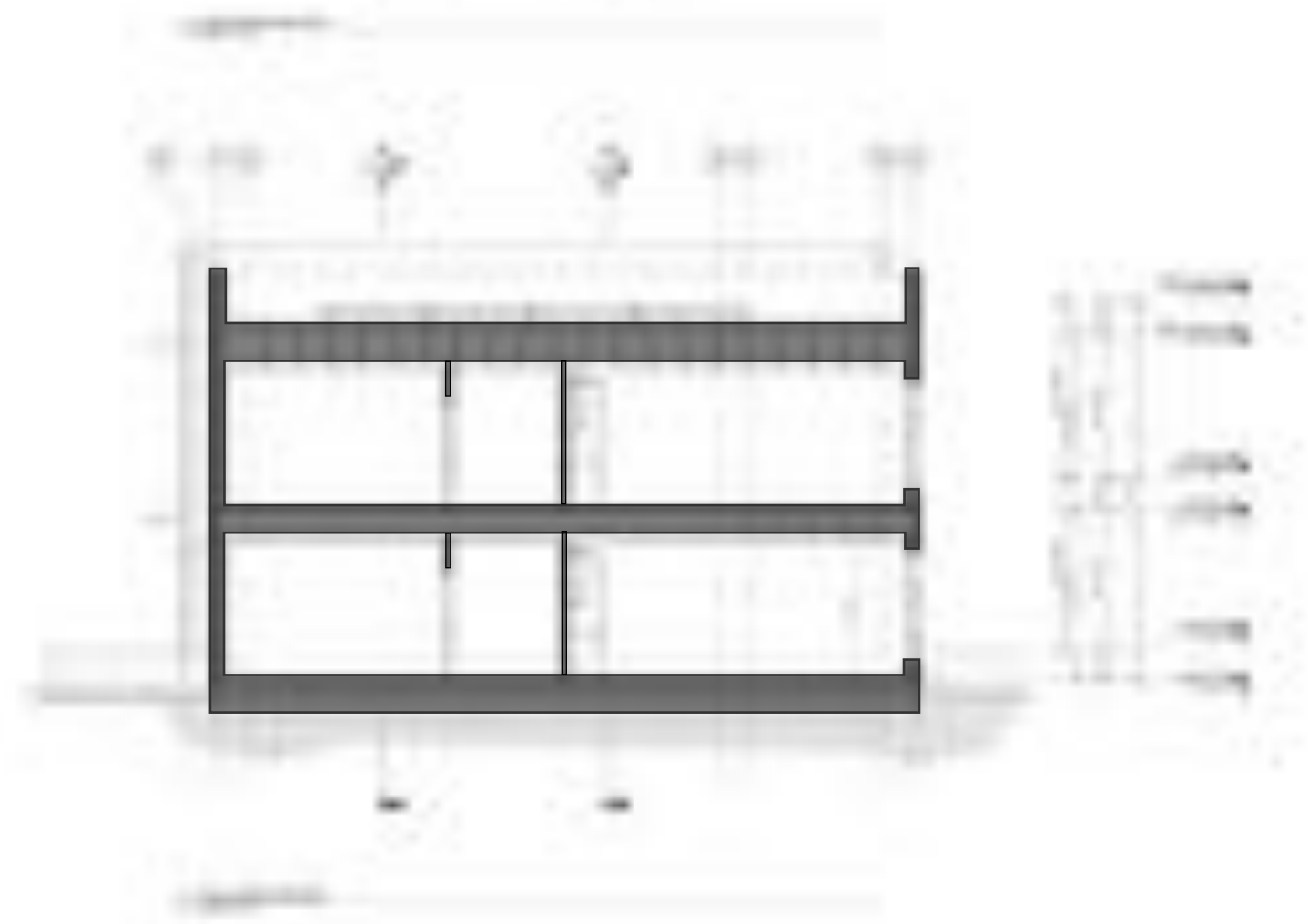
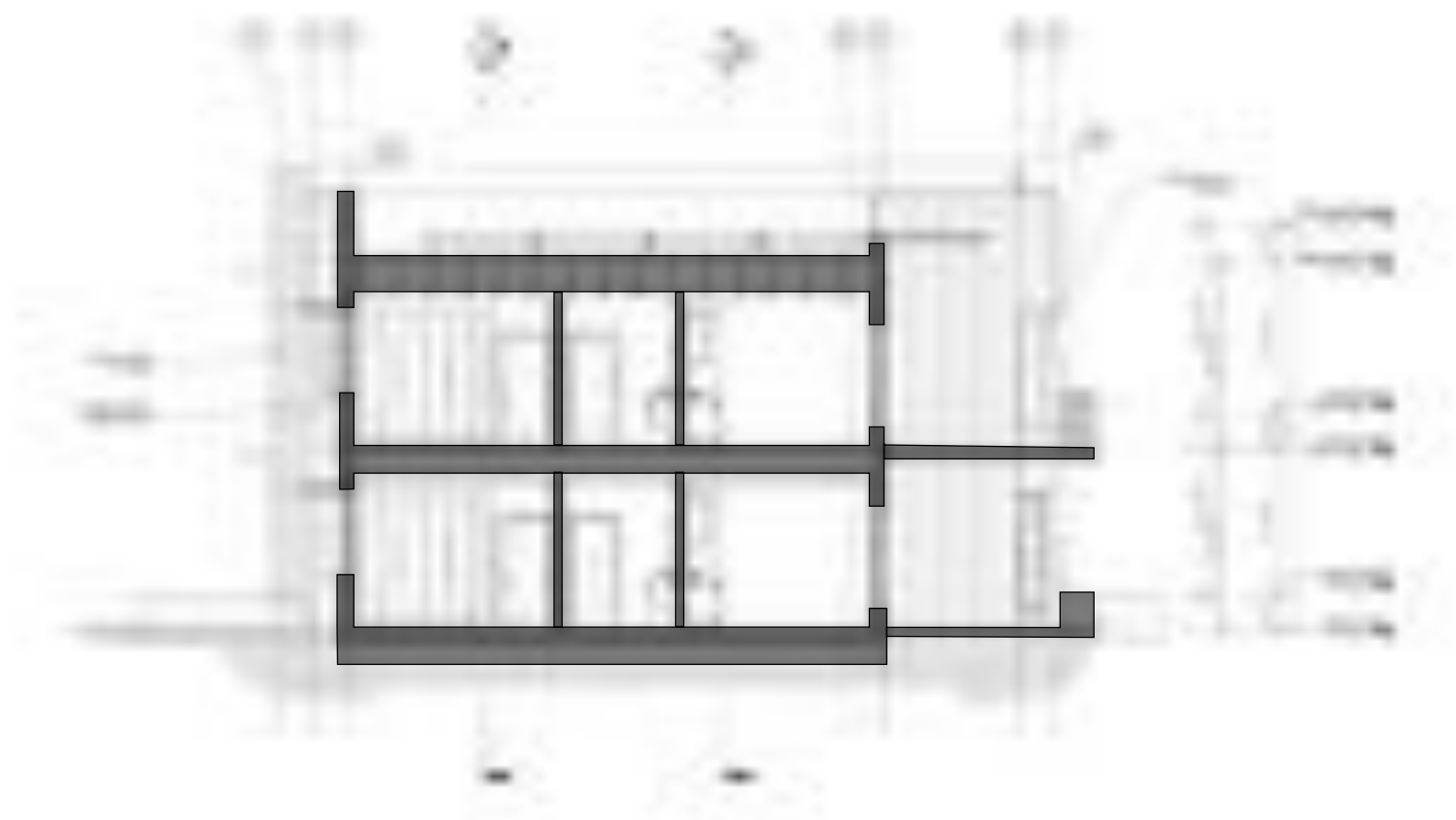


11

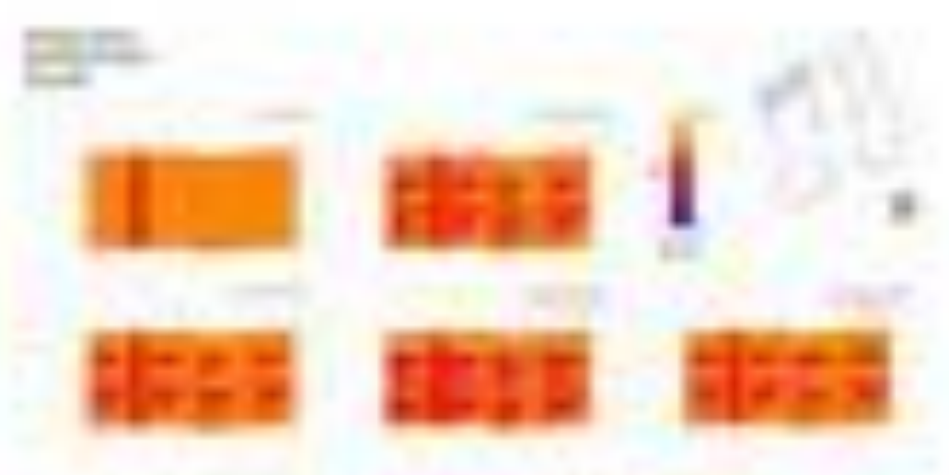
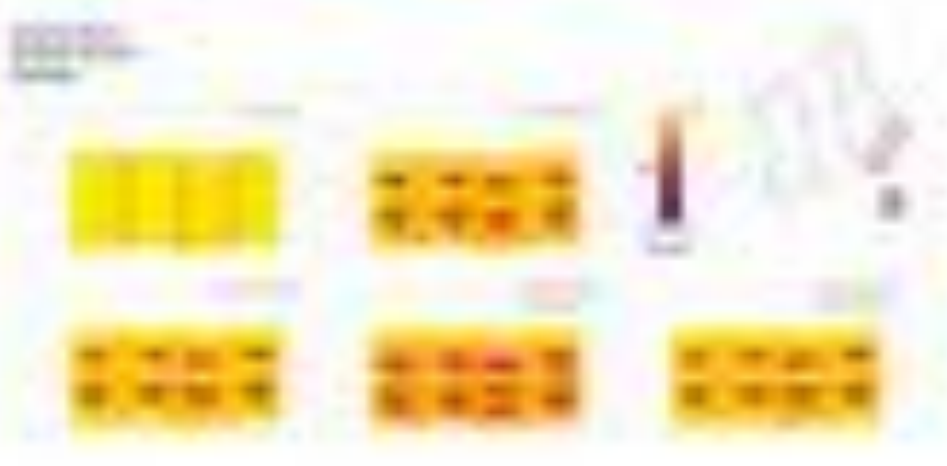








11





50% DESIGN DEVELOPMENT





Commons Elevation



Street Elevation



Street Elevation – Alternate 1



Street Perspective



Street Perspective – Alternative 1



Street Perspective – Alternative 1 Silvered



50% DESIGN DEVELOPMENT

UC SANTA CRUZ FAMILY STUDENT HOUSING

